



VAN BODIES



V.KO DRY Box Kit

for the Volkswagen Crafter

Your Benefits at a Glance:

- 10 % more payload*
- Highly durable: 1,000,000 km hydropulse testing in the company's own laboratory, independent endurance testing by DNV GL and individual OEM manufacturers
- Robust modules deliver impressive production quality, durability and service life
- Diverse range of equipment
- Lower long-term total cost of ownership (TCO) and greater value retention
- 24-hour spare parts supply, ordered via the EPOS online portal from Schmitz Cargobull**

* Than comparable sandwich constructions. Values may vary depending on the equipment and configuration.

** Applies for 95 % of the original spare parts in stock.

**10%
more
payload!**

**Body
strength:
DIN EN 12642
Code XL**

**Load
securing fulfilled:
DIN EN 12640**



Entry bar* underneath the side door, mud-guard* and side guard* – the necessary assembly points are factory-fitted on the bottom of the body.



Pull-out access ladder* made of galvanised steel at the rear.



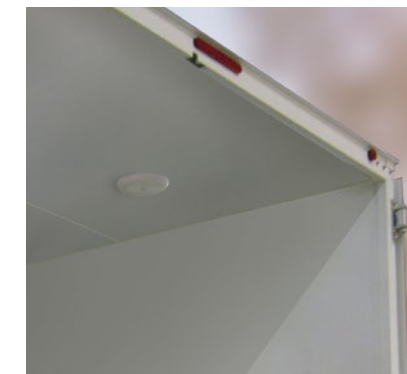
Stairs with folding step*, with optional three or four steps for comfortable access to the freight.



Translucent light roof for a bright interior – available as standard.



Sensor-controlled LED lights in the interior. A second light is optional for the light roof.



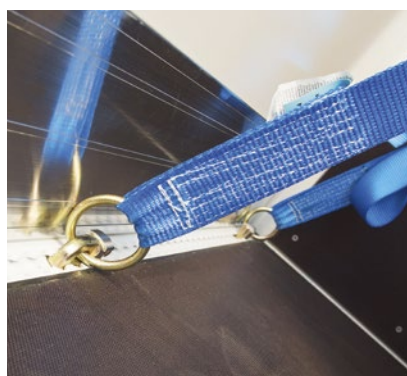
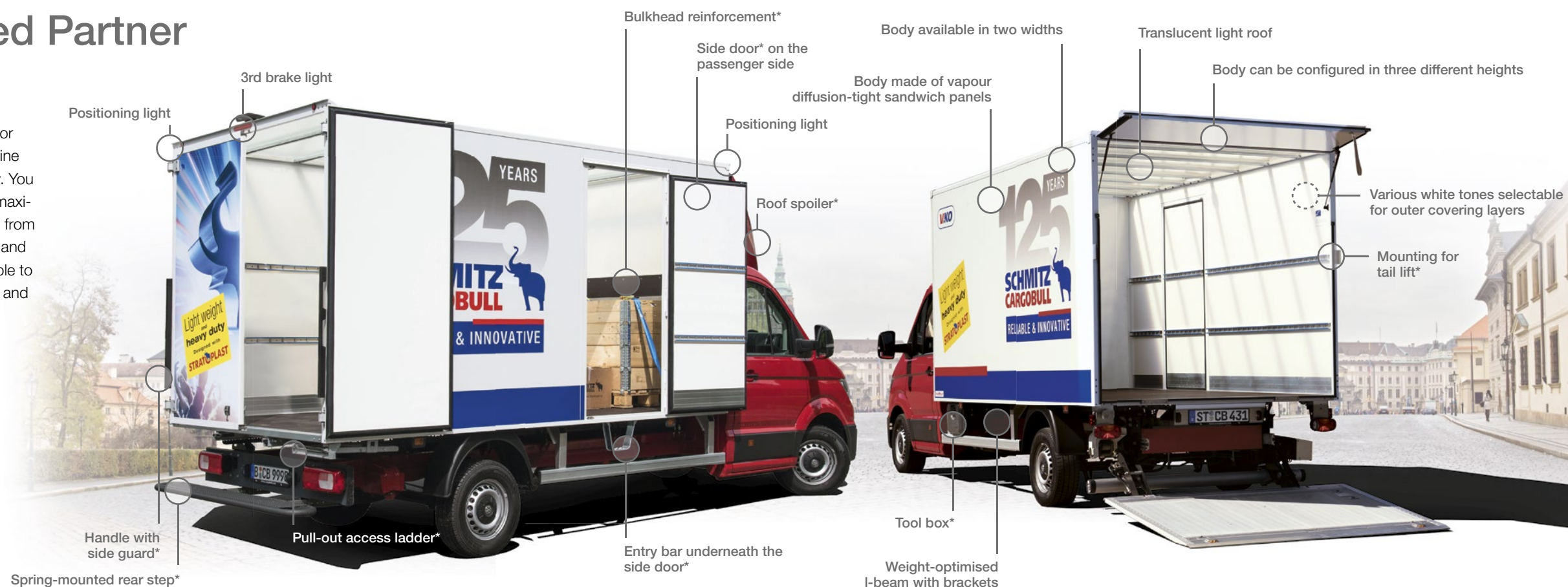
Lightly-insulated sandwich roof* can be ordered as an alternative to the light roof.

Your Multi-Talented Partner for the Last Mile

The box kits from Schmitz Cargobull Van Bodies for light commercial vehicles from 3.0 t to 6.0 t combine outstanding practicality with exceptional economy. You receive a light and highly durable body providing maximum payload. Assembling prefabricated modules from industrial manufacturing ensures very high quality and reliability. Two widths and three heights are available to create the ideal combination of compartment size and payload.

The basic equipment:

- Translucent light roof
(Option: lightly-insulated sandwich roof)
- Double-wing door or preparation for the tail lift
- Sensor-controlled LED roof lights
- Side airline rails in the floor
- Front/rear positioning lights and 3rd brake light integrated into the rear



Airline rail, permanently integrated into the floor, for lashing as per DIN EN 12640.
Surrounding scuff rail, 150 mm high.

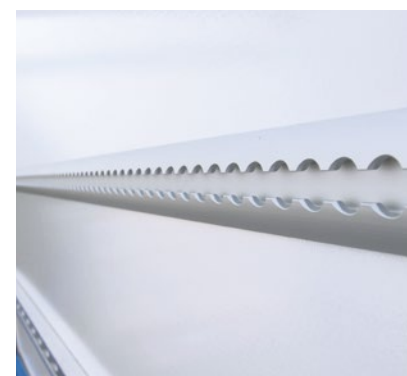


Lashing bars* in the interior wall at 900 mm high or 2 strips* at 600 and 1,200 mm high. Also available on the bulkhead (optional).



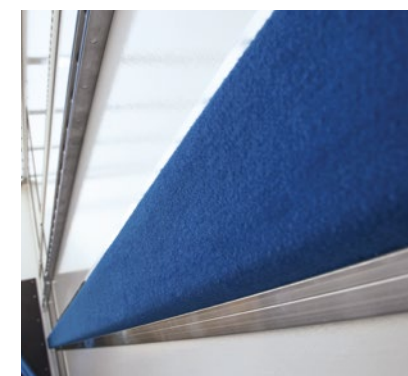
Full-length combo anchor rail* at 900 mm high for lashing straps and load securing beams – alternative to the lashing bar.

* Optional.



Airline rail* on the side wall for studs and horizontal load securing beams (height can be individually set).

* Optional.



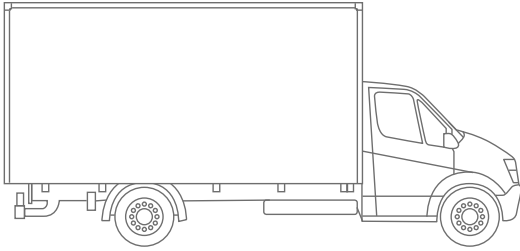
Side padded rail* for furniture transport (height can be individually set).



Side door* – with full-length load securing – sits perfectly flush on the inside with the side wall. This prevents load damage when pushing the load through.

Technical Data

V.KO DRY Box Kit for the Volkswagen Crafter



Crafter

Permissible total mass in t	3.5 / 5.5	3.5 / 5.5
Wheelbase in mm	3,640	4,490

Body dimensions

Exterior length in mm	3,617	4,417
Exterior width in mm	2,134 / 2,284	
Exterior height in mm	2,215 / 2,315 / 2,415	
Interior length in mm	3,550	4,350
Interior width in mm	2,080 / 2,230	
Interior height in mm	2,121 / 2,221 / 2,321	

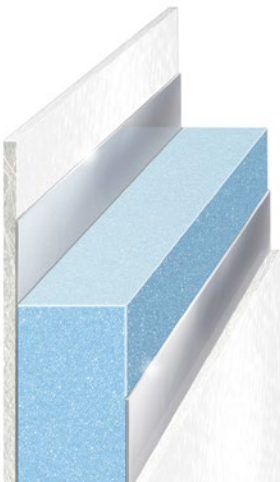
Equipment

Rear doors	<input checked="" type="radio"/>
Rear doors and side door	<input type="radio"/>
Prepared for tail lift	<input type="radio"/>
Prepared for tail lift and the side door	<input type="radio"/>

Roof

Translucent light roof	<input checked="" type="radio"/>
Sandwich roof	<input type="radio"/>
Second LED roof light (light roof only)	<input type="radio"/>

STRATOPLAST panels are a new development for GRP bodies, providing longer-lasting light and weathering resistance. Vapour diffusion blocks, made of metallic composites on both sides, flexibly adapt to suit the load. They also ensure that moisture cannot penetrate and condense into the foam core. Your payload capacity remains constant over long-term use.



Load securing

Lashing bar 600 and 1,200 mm high	<input type="radio"/>
Lashing bar 900 mm high	<input type="radio"/>
Combo anchor rail 900 mm high	<input type="radio"/>
Airline rail**	<input type="radio"/>
Padded rail**	<input type="radio"/>

** Individually configure the heights.

Accessories

Rear access ladder, various options	<input type="radio"/>
Mudguard	<input type="radio"/>
Bulkhead reinforcement, 6 mm multiplex plate	<input type="radio"/>
Roof spoiler	<input type="radio"/>
Tool kit	<input type="radio"/>
Side guard	<input type="radio"/>
Spring-mounted rear step	<input type="radio"/>

● Basic equipment ○ Optional

Submitted by:



Put your company stamp here.