



VAN BODIES



## V.KO DRY Box Kit – Product Range

### An Easy Job for Body Builders

#### Your Benefits at a Glance:

- Two technicians require 2 hours to assemble the V.KO DRY box kit
- The complete box kit set consists of the seven prefabricated modules, including wiring and equipment
- The body can be assembled easily, precisely and rapidly thanks to the intelligent joining technology with interlocking profiles
- Rapid delivery of your kit, thanks to series production. The binding delivery confirmation\* allows the trailer construction to be accurately scheduled
- Wide model compatibility when choosing the vehicle manufacturer. The box kits are optimally designed for the wheelbase and body length and, at the customer's request, are available for the current 3.0 t to 6.0 t model ranges from leading vehicle manufacturers

\* After the order has been cleared, depending on available capacity.

\*\* Certificates from the chassis manufacturer are available.





Flush-mounted side door\* prevents load damage when pushing the load through.



Sensor-controlled LED roof lights.

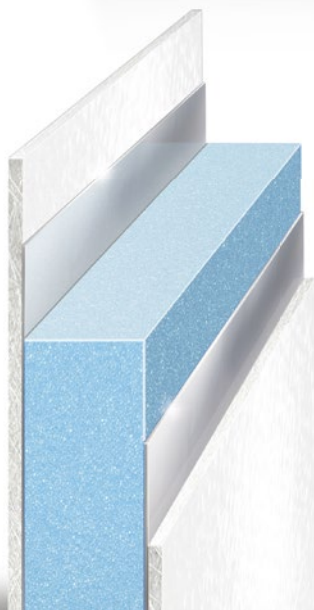


Side airline rails in the floor.

**10%  
more  
payload!**

**Body  
strength:  
DIN EN 12642  
Code XL**

**Load  
securing fulfilled:  
DIN EN 12640**



**STRATOPLAST** panels are a new development for GRP bodies, providing longer-lasting light and weathering resistance. Vapour diffusion blocks, made of metallic composites on both sides, flexibly adapt to suit the load. They also ensure that moisture cannot penetrate and condense into the foam core. Your payload capacity remains constant over long-term use.

## The Benefits for Your Customers

- 10 % more payload\*
- Highly durable: 1,000,000 km hydropulse testing in the company's own laboratory, independent endurance testing by DNV GL and the OEM manufacturers
- Robust modules deliver impressive production quality, durability and service life
- Wide variety of equipment
- Lower long-term total cost of ownership (TCO) and greater value retention
- 24-hour spare parts supply, ordered via the EPOS online portal from Schmitz Cargobull\*\*

\* Than comparable sandwich constructions. Values may vary depending on the equipment and configuration.

\*\* Applies for 95 % of the original spare parts in stock.